

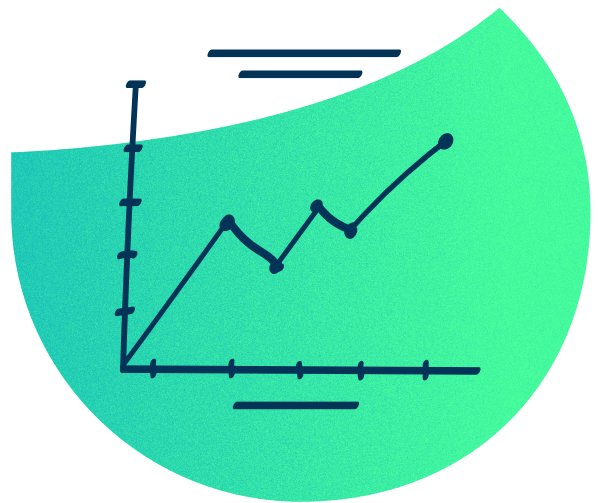


Brightly Stream

Take control of your energy & ESG data to drive results

Brightly Stream provides expert utility data management software and support services for commercial real estate and facility management looking to take their energy efficiency and sustainability management operations to the next level.

The robust platform offers reliable data collection and reporting to keep stakeholders, clients and investors aligned on sustainability targets.



Key Benefits



Reliable data

Consumption and rates directly sourced from utility bills ensuring your data is investor-grade.



Zero carbon and energy target setting

Provide a strategic planning tool for setting and tracking site and portfolio-level energy reduction and net-zero targets.



Disclose with ease

Keep up with regulatory and investor demand. Stream supports sustainability reporting including GRESB, SASB, SBTi, SFDR, CRREM and ENERGY STAR.



Real-time analytics that drive savings

Use advanced analytics, tools and capabilities with the potential to reduce your energy costs by 20%.



Scalable solutions

Tailored service levels that meet your needs including solutions focused on carbon reporting, and advanced analytics that source from building automation systems (BAS), submeters & fault detection (FDD).



ENERGY STAR & Normalization

Automatic two-way updates with ENERGY STAR as well as the ability to normalize performance to remove fluctuations in weather & occupancy.

Stream Stats at a Glance



20%

less energy consumed by buildings utilizing Stream Performance Analytics



\$1+ billion

utilities tracked annually



6000+

buildings managed by Brightly for utility costs and ESG data

Stream: Scalable solutions

Stream offers tailored levels of service to scale to your needs.

Stream Reporting Plus

Streamlined access to utility and emissions data to support ESG strategy. Recommended for properties where landlord-paid utility costs are not material (ex. industrial assets).

Stream Performance Analytics

Advanced analytic tools and support for property teams looking to drive resource and emission reductions. Recommended for properties with substantial landlord-paid utility costs (ex. high-rise office towers).

Description	Stream Reporting Plus	Stream Performance Analytics
Stream features		
Historical analysis	✓	✓
GHG emissions	✓	✓
Bills received (access and download bill PDFs)	✓	✓
Document repository	✓	✓
Building information	✓	✓
Standard reports (download common reports)	✓	✓
Custom reports (create your own utility data reports)	✓	✓
Building certification tracking	✓	✓
Energy benchmarking	✓	✓
Space manager	✓	✓
ENERGY STAR	✓	✓
Submeter reading entry	✓	✓
Real-time analytics		✓
Configurable dashboards		✓
Vacancy tracking		✓
Normalized performance		✓
Budget tracking		✓
Stream services		
Bill data entry and validation	✓	✓
Corporate access (up to 5 users)	✓	✓
Support desk	✓	✓
Property-level access (unlimited users)	✓	✓
Exception / anomaly detection and notifications		✓
Accrual preparation		✓
Missing data estimation		✓