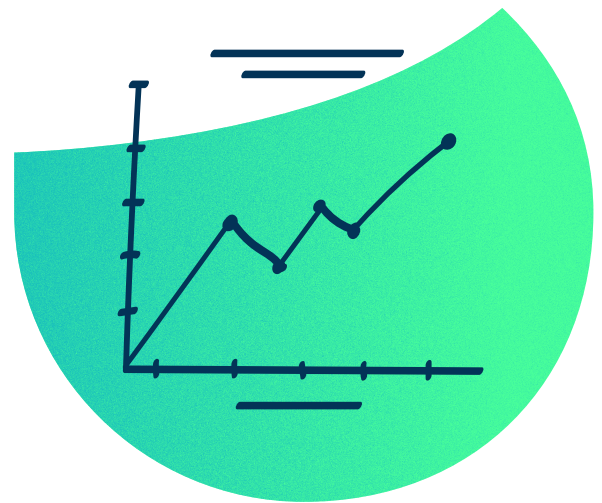




Brightly Stream™

Take control of your energy & ESG data to drive results

Trusted by the largest commercial real estate companies in North America, Stream is a sustainability SaaS solution designed to optimize energy usage, reduce waste, and lower carbon footprints across property portfolios. It includes utility data collection tools that gather information from North American utility companies, meters, and building automation systems. Stream leverages this data to offer insights into building operations and emissions. Additionally, it provides interfaces that simplify data submissions to various industry and regulatory organizations, aiding in obtaining green certifications and benchmarks.



Key Benefits

✓ **Reliable data**

Consumption and rates directly sourced from utility bills ensuring your data is investor-grade.

Disclose with ease

Keep up with regulatory and investor demand. Stream supports sustainability reporting including GRESB, SASB, SBTi, SFDR, CRREM and ENERGY STAR.

Real-time analytics that drive savings

Use advanced analytics, tools and capabilities with the potential to reduce your energy costs by 20%.

ENERGY STAR & Normalization

Automatic two-way updates with ENERGY STAR as well as the ability to normalize performance to remove fluctuations in weather and occupancy.

Scalable solutions

Tailored service levels that meet your needs including solutions focused on carbon reporting, and advanced analytics that source from building automation systems (BAS), submeters & fault detection (FDD).

Stream Stats at a Glance



20%

less energy consumed by buildings utilizing Stream Performance Analytics



\$1+ billion

utilities tracked annually



6000+

buildings managed by Brightly for utility costs and ESG data

Description	Stream CORE	Stream PRO	Stream Enterprise
Software Services			
Utilities Data Collection			
Automated utility bill data collection	✓	✓	✓
Data validation services	✓	Linear Model	Advanced Models
Utilities Data			
Budget tracking	✓	✓	✓
Historical analysis	✓	✓	✓
Energy benchmarking	✓	✓	✓
Normalized performance	✓	✓	✓
Tenant budget tracking	✓	✓	✓
Bills received (access and download bill PDFs)	✓	✓	✓
ENERGY STAR	✓	✓	✓
Custom dashboards (create your own utility data reports)	✓	✓	✓
Waste			
Waste historical analysis	✓	✓	✓
Waste benchmarking	✓	✓	✓
Emissions			
GHG emissions	✓	✓	✓
Non-utility GHG entry	✓	✓	✓
Buildings			
Building information	✓	✓	✓
Document repository	✓	✓	✓
Space manager	✓	✓	✓
Submeter reading entry	✓	✓	✓
Certifications	✓	✓	✓
Reporting	✓	✓	✓
Survey			
Survey editor	✓	✓	✓
Survey reporting	✓	✓	✓
Targets			
Carbon planning		✓	✓
Analytics			
Real-time analytics			✓
Submeters analytics			✓
Operational analytics live			✓
Tech Support			
Support desk	✓	✓	✓
Additional Stream Services			
Exception/anomaly detection and notifications		✓	✓
Accrual preparation services		✓	✓
Missing data estimation services		✓	✓
Real-time analytics services			✓
Submeters analytics services			✓
Operational analytics services			✓