

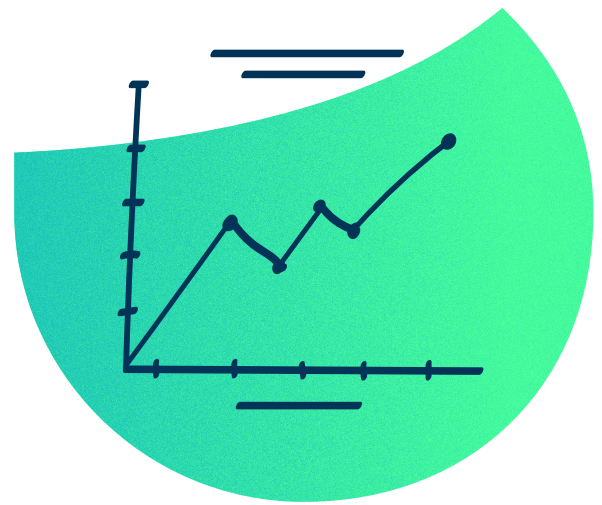


A Siemens Company

Brightly Stream™

# Data you can trust to drive energy savings and sustainability initiatives

Trusted by leading companies across North America, Stream is a sustainability SaaS solution that collects and verifies your utilities data to provide actionable insights that help you optimize energy usage, lower costs, reduce waste, and create a more sustainable pathway to reducing carbon emissions. Stream's intuitive interface simplifies and centralizes your data so your organization can meet internal and external reporting requirements, achieve certifications, and meet critical benchmarking standards.



## Key Benefits



### Investment grade data, always

Consumption and costs from utility bills and trusted sources are validated to ensure your data is investor-grade.



### Easy sustainability reporting

Stream supports sustainability reporting including GRESB, SASB, SBTi, SFDR, CRREM, and ENERGY STAR to help you keep up with regulatory and investor demand.



### Clear pathways to reduce costs

Use advanced analytics, tools, and capabilities to reduce your energy costs and emissions by up to 20% or more.



### Fast and scalable service solutions

Tailored service levels that meet your needs, including solutions focused on carbon reporting, and advanced analytics leveraging data from building automation systems (BAS) and submetering systems.



### Siemens security and reliability

Brightly Software, a Siemens company, brings extensive expertise in automation, digitalization, and electrification forming the foundation for a long-term security partnership and pathways to digital twins.



### ENERGY Star & normalization

Automatic two-way updates with ENERGY STAR as well as the ability to normalize performance to remove fluctuations in weather and occupancy.

## Stream Stats at a Glance



# 20%

energy savings (on average) for organizations utilizing Stream Enterprise



# \$1+ billion

in utility bills tracked annually, and growing



# 10,000+

buildings managed by Brightly for utility costs and ESG data

## What our clients are saying about Stream™

“

Having a tool like Stream provides a single point of truth for energy and carbon usage, so we can see how we're benchmarking and how we can plan for the future.

”

**David Basford** — Royal Centre Property Manager,  
Warrington PCI Management in Vancouver

## Stream Core Functionality

Available in all Stream Plans

### Utilities Data

- Automated utility bill data collection
- Data validation
- Missing invoice alerts
- Budget tracking
- Historical analysis
- 12 month pre-onboarding data
- Energy benchmarking
- Normalized performance
- Access and download bill PDFs
- ENERGY STAR sync
- Custom dashboards and reports



### Emissions

- GHG emissions tracking
- Non-utility GHG entry



### Buildings

- Centralized building information
- Quick-find document repository
- Space manager
- Submeter reading entry
- Certifications
- Reporting



### Surveys

- Simplified data collection
- Survey editor
- Survey reporting



### Waste

- Waste historical analysis
- Waste benchmarking



# Plan Dependent Functionality

Service:		Core	Professional	Enterprise
Data Entry Methodology	Dates, consumption, total cost, tax, bill status	✓	✓	✓
	+ Electricity demand		✓	✓
	+ Individual line-item costs, additional determinants (TLF, PF, kVa)			✓
Standard Quality Assessment	Data quality audit using linear rate models		✓	✓
	Anomalies identified. Items flagged and processed		✓	✓
	Data quality audit using linear regression models			✓
	Line items mapped to component buckets			✓
	Account consumption validation		✓	✓
Automated Anomaly Detection	High-level discrepancies	✓	✓	✓
	Generic linear models for consumption		✓	✓
	Weather data for utility rate alignment		✓	✓
	Billing anomalies flagged		✓	✓
	High materiality threshold for cost variance		✓	✓
	Digital twin development			✓
	Linear regression models for consumption			✓
	Billing anomalies addressed			✓
Billing discrepancies with vendors resolved			✓	
Data and Analytics	Accrual calculation and preparation		✓	✓
	Missing data estimation		✓	✓
	Real-time analytics (requires interval-data collection)		✓	✓
	Submeters analytics (requires interval-data collection)		✓	✓
	Operational analytics (requires interval-data collection)		✓	✓
Carbon Tracking	Utility data paired with emission factors	✓	✓	✓
	Set measures and implementation schedules		✓	✓
	Define zero-carbon pathways		✓	✓
Training & Technical Support	Support desk	✓	✓	✓
	Online training library	✓	✓	✓
	Onboarding and implementation session	✓	✓	✓
	Remote training session		✓	✓
	Monthly strategy sessions			✓

## Managed & Professional Service Add-Ons

### Leverage over 20 years of sustainability consulting

Reducing energy costs and meeting sustainability goals can be time consuming and often requires specialized knowledge. With over 20 years of sustainability experience, our team can help you get the most out of Stream's powerful capabilities. Brightly's managed and professional services add-ons have helped leaders and managers in commercial real estate (CRE), schools, government, healthcare, and manufacturing, to plan and implement sustainability initiatives, all while reducing utility costs. Clients that use Stream and Brightly consulting services reduce energy consumption by 20% on average.

Ask your Brightly representative for more information about our managed and professional services add-ons.